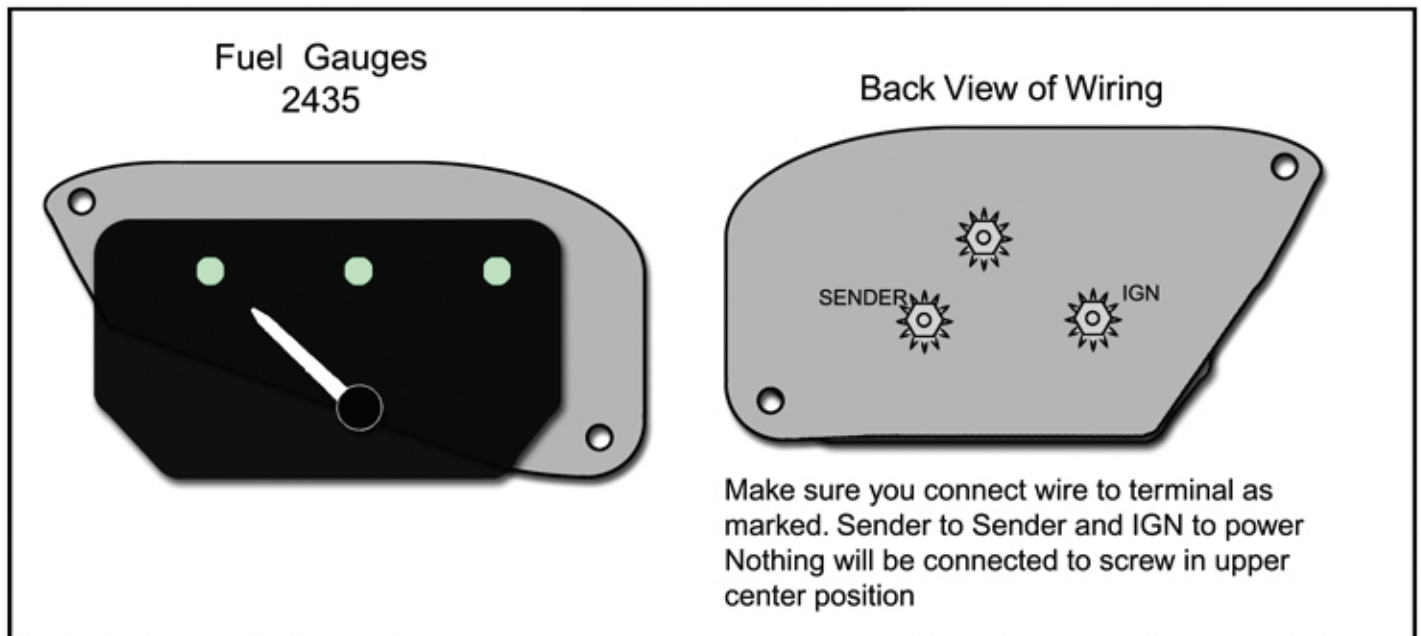


Fuel Gauge

1. Remove instrument cluster and remove original Fuel Gauge from cluster.
2. Install Fuel Gauge into instrument cluster. Now reinstall Gauge Cluster into the dash and connect wires. See diagram below for wiring information.

NOTE: The fuel senders have a 0 to 30 OHMS + or - 10%



Testing the Gauge by use of OHM Meter

- | | |
|--------------------------------|-----------------------------|
| 1. Ignition to Ground 160 OHMS | 3. Ground to Sender 55 OHMS |
| 2. Ignition to Sender 105 OHMS | OHMS may vary + or - 10% |