

Horn Relay

INSTRUCTIONS

This Replacement Horn Relay terminals are in the same configuration as the your Factory Headlight / Generator Harness (441 - 6cyl, 441A - V8 or 2767 Internal Regulator Alternator). See connector Diagram 1. If the harness you have does not use the same colors as the factory harness see Diagram 2 as a guide.

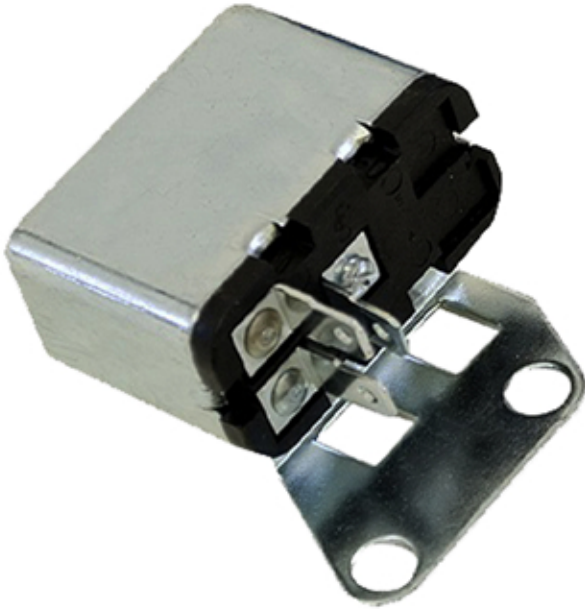
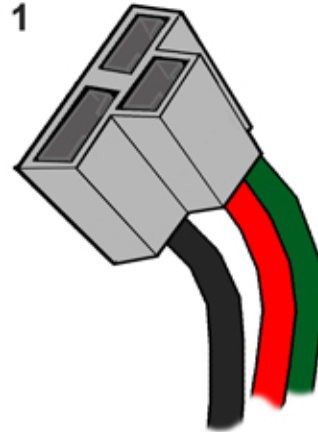
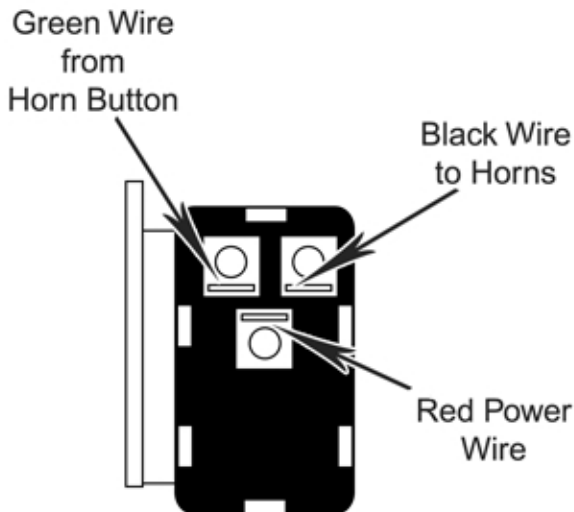


Diagram 1



Connector part of 441(6cyl) or 441A (V8)
Headlight / Generator Harness

Diagram 2



Our Classic Update 11204 and Highway 15 Circuit 12807 or 20 Circuit 12808 Harnesses for the most part are designed as plug and play kit for easy installation