

INSTRUCTIONS FOR 2 1/16" GAUGE MOUNTING CUPS

For use with any mechanical or electrical gauge.

2650-1169

Danchuk 12261



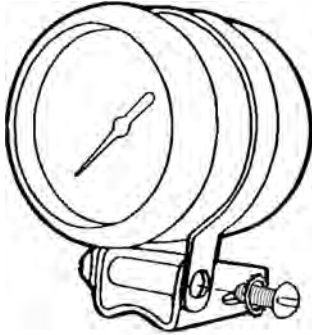
QUESTIONS:

If after completely reading these instructions you have questions regarding the operation or installation of your instrument(s), please contact Auto Meter Technical Service at 815-899-0801.

You may also email us at service@autometer.com.

Additional information can also be found at http://www.autometer.com/tech_faq.aspx

ASSEMBLY

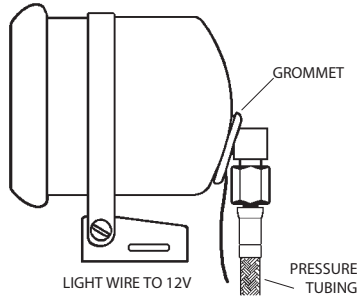


INSTALLATION:

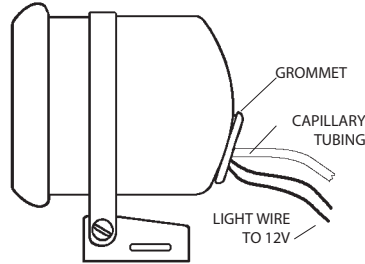
1. Install mounting base using 2 sheet metal screws or stainless steel hose clamp (not included).
2. Attach strap loosely to base using (2) 10-32x1/2 screws with lockwashers and threaded spacer.
3. Slide the mounting cup into the mounting strap and tighten the strap mounting screws.

NOTE: When using 2121, 2203 or 2204 cups, studs on white plastic case must be shortened approximately 1/4 to 3/8".

MECHANICAL PRESSURE



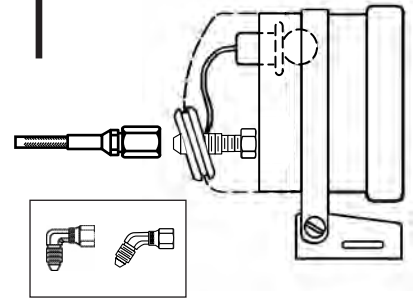
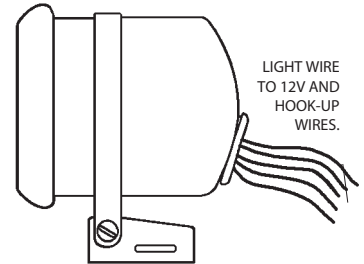
MECHANICAL TEMPERATURE



For some applications it may be necessary to use a -4AN elbow fitting (pictured on right). Either a 90° elbow fitting (Auto Meter model number 3274) or 45° elbow fitting (Auto Meter model number 3273) can be used in the application. These fittings can be purchased through Auto Meter or your local high performance dealer.

Note: To make installation easier install the hose kits and the elbow fittings before installing the cup.

ELECTRICAL



FOR SERVICE SEND TO: AUTO METER PRODUCTS, INC. 413 W. Elm St., Sycamore, IL 60178 USA (815) 899-0801

© 2006 Auto Meter Products, Inc.

Email: service@autometer.com

2650-1169 7/11/06

INSTRUCTIONS FOR 2 1/16" GAUGE MOUNTING CUPS

For use with any mechanical or electrical gauge.

2650-1169



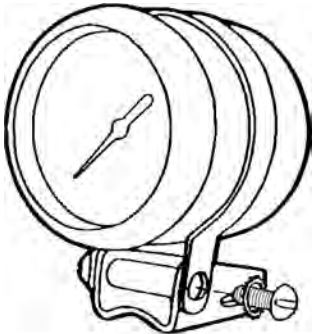
QUESTIONS:

If after completely reading these instructions you have questions regarding the operation or installation of your instrument(s), please contact Auto Meter Technical Service at 815-899-0801.

You may also email us at service@autometer.com.

Additional information can also be found at http://www.autometer.com/tech_faq.aspx

ASSEMBLY

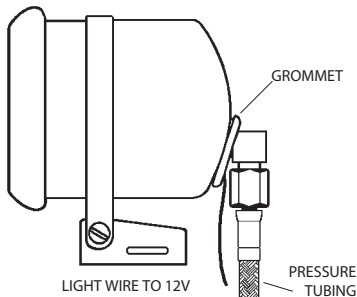


INSTALLATION:

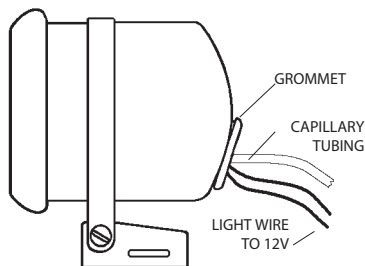
1. Install mounting base using 2 sheet metal screws or stainless steel hose clamp (not included).
2. Attach strap loosely to base using (2) 10-32x1/2 screws with lockwashers and threaded spacer.
3. Slide the mounting cup into the mounting strap and tighten the strap mounting screws.

NOTE: When using 2121, 2203 or 2204 cups, studs on white plastic case must be shortened approximately 1/4 to 3/8".

MECHANICAL PRESSURE



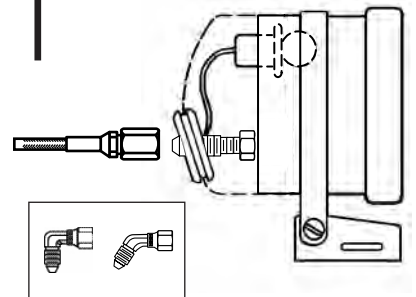
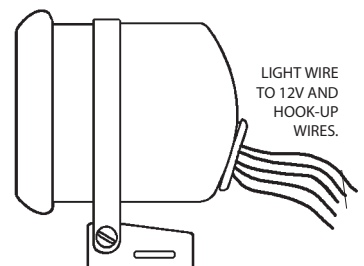
MECHANICAL TEMPERATURE



For some applications it may be necessary to use a -4AN elbow fitting (pictured on right). Either a 90° elbow fitting (Auto Meter model number 3274) or 45° elbow fitting (Auto Meter model number 3273) can be used in the application. These fittings can be purchased through Auto Meter or your local high performance dealer.

Note: To make installation easier install the hose kits and the elbow fittings before installing the cup.

ELECTRICAL



FOR SERVICE SEND TO: AUTO METER PRODUCTS, INC. 413 W. Elm St., Sycamore, IL 60178 USA (815) 899-0801

© 2006 Auto Meter Products, Inc.

Email: service@autometer.com

2650-1169 7/11/06